

Facts, Statistics and Scripts

Version 1.0 September 2025

Contents

Murdoch University has a lot to be proud of. This document contains key facts, statistics and scripts for you to use when promoting the university to external audiences. It is intended for you to cut and paste information as needed, rather than using the document in its entirety.

- **Purpose and priorities**

- **Facts and Statistics**

- Murdoch University at a glance

- What makes Murdoch University unique

- Ratings and Awards

- Celebrating 50 years

- Murdoch University Study areas

- Teaching and study facilities

- **Scripts**



Purpose and Priorities

Our Vision

Our vision is to be widely recognised as the university of choice for people who care, who value inclusion, curiosity and innovation, and who desire to make a positive social impact.

Murdoch University will be a leading university in education, teaching and research in sustainability; a thriving, welcoming, diverse and inclusive community. We will be the university of first choice for First Nations peoples, promoting and benefiting from Indigenous Knowledges. Our quality education will be contemporary, accessible and inclusive. Our graduates will be keenly sought by employers and will be known for having adaptability, fresh perspectives, practical skills and a social conscience. Our research will be impactful, and we will have strong industry and institutional collaborations.

Murdoch's legislated purpose is "the advancement of learning and knowledge, and the provision of university education", expressed through our core activities of education, research, and engagement.

Ngala kwop biddi.

Building a brighter future, together.

Our purpose and vision are put into action through *Murdoch University's Strategy 2023-2030: Ngala Kwop Biddi: Building a Brighter Future, Together*. The three strategic themes – Sustainability; Equity, Diversity and Inclusion; and First Nations – articulate our values and principles and drive expression of our core activities.

The Three Strategic Themes

Sustainability

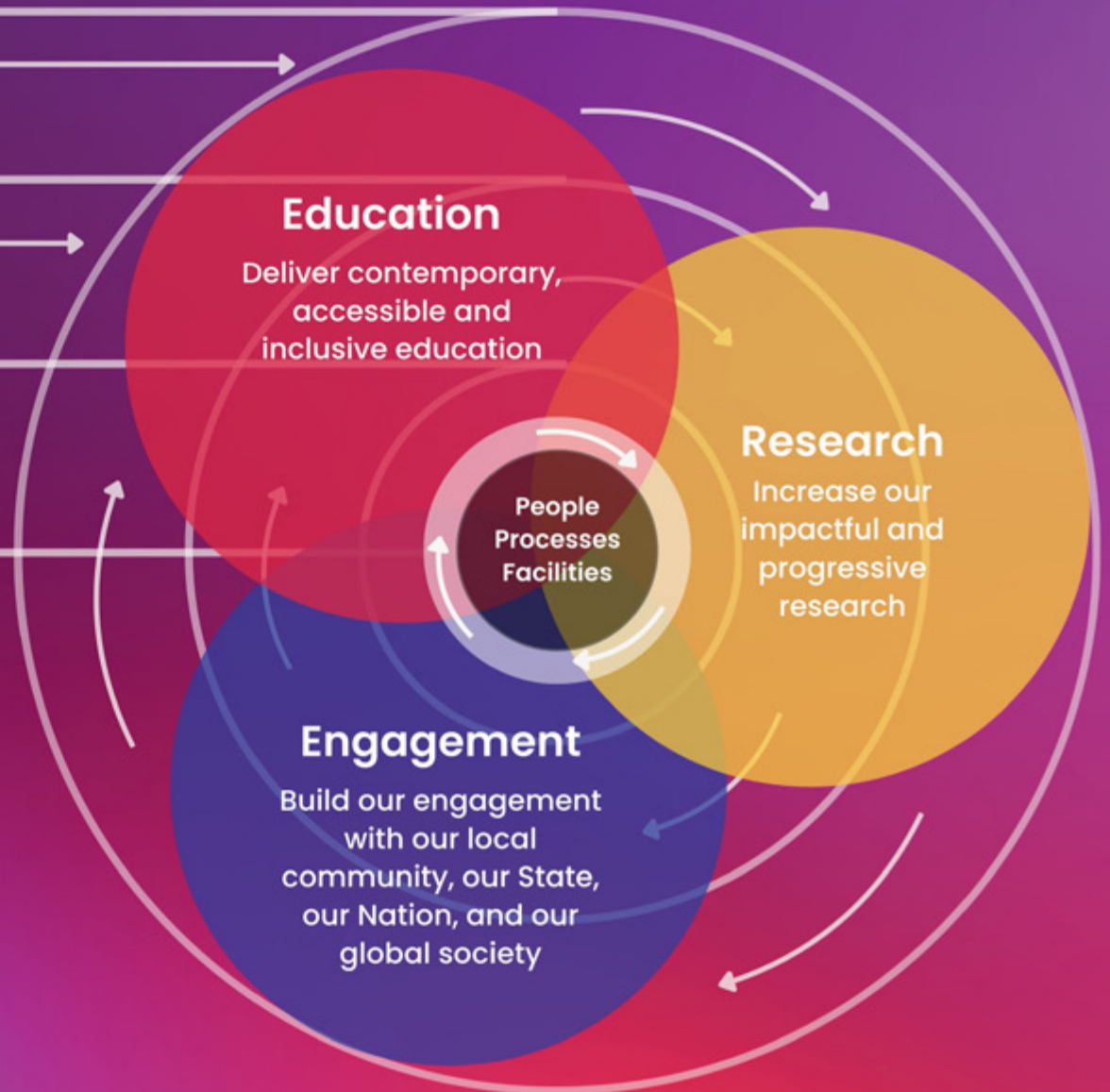
Be a leading university in education, teaching and translational research in sustainability

Equity, Diversity and Inclusion

Build a welcoming, diverse and inclusive community

First Nations

Become the University of Choice for First Nations People



Facts and Statistics

Murdoch University at a glance

- Established 1975
- First to introduce Environmental Science courses in the nation
- The university began operations as the state's second university
- The university's campus is urban and parkland, covering 277 hectares
- 5 campuses – Perth (Murdoch), Mandurah, Rockingham, Dubai and Singapore
- Over 250+ courses, 17 study areas
- Just 15km from Perth's city centre and 8km from Fremantle, our Perth campus is easy to reach by car, public transport, or via a network of walkways and cycleways.

Est. 1975

1st Environmental
Science course
in Australia

250+ courses
17 study areas

- Over 24,000 students from across 90 different countries
*Undergraduate (16,219),
 Postgraduate (8,529),
 Domestic (10,528),
 International Onshore (8,772),
 Transnational education (5,433)**
- Over 1,800 staff members (full time equivalent staff)
*Academic staff (794),
 Professional staff (1,062)**
- Over \$2.5 million in scholarships awarded every year
- There is over 8 coffee shops, a retail grocery store, Tavern and over 10 food outlets available on the South Street campus

**Source: 2024 Annual report*

24,000+
students

1,800+
staff



8 coffee
shops



Grab n Go
store



10+
food outlets



The Tavern

What makes Murdoch University unique

- Murdoch University is a member of the **Innovative Research Universities** (IRU), a network of seven comprehensive universities in Australia committed to inclusive excellence in teaching and research.
- Murdoch University is proud of its reputation for teaching excellence and world-class research facilities, celebrating student diversity, ground-breaking education initiatives, and a supportive learning environment
- The university is dedicated to changing lives and society for the better through accessible education and research. It aims to be widely recognized as the university of choice for people who care, value inclusion, curiosity, and innovation, and desire to make a positive social impact.
- For 50 years, Murdoch University has been a **place of difference**. We've created a place of learning and discovery through our leading academics, innovative courses, and global, ground-breaking research.
- We pioneered access to a university education for all people, and have seen more than 100,000 Murdoch University graduates take their education to the world to help solve its challenges.
- The South Street campus is home to unique Australian wildlife such as the quenda and boasts 47 native plant species.



- **Support for every step** – Murdoch University offers various support services to help students thrive, from enrolment guidance at Student Central to study tips from Peer Academic Coaches. Plus, students can enjoy free health and wellbeing support at The Den to help adjust to university life.
- **Study Abroad and Exchange** – The world becomes your classroom when you join one of our 60 Study Abroad and Exchange programs across the globe. Whether students spend a winter abroad in Europe or do a semester exchange in Asia, the opportunities are endless.
- Choose from three **specialised criminology** majors, including Crime Science – the only majors of their kind in Australia.
- **On-campus farm** – We are the only city-based university in Australia with a farm on campus, meaning our students have easy access to animals for practical sessions.
- First university in Australia to offer **SimLab™** – simulated classroom teaching technology utilising virtual reality and human actors.
- Get experience in our **Bayer Pilot Plant**, a real-world engineering plant with a dedicated control room, the only one of its kind in WA.
- **Living laboratories** – Murdoch University has an on-campus conservation wetlands, banksia woodlands.
- Students can gain experience and academic credit in our **Murdoch SCALES Law Clinic**, a real legal practice where they can provide vital legal services to the community.
- **Teaching and Study Facilities** – The teaching and study facilities at Murdoch University, including the new sustainable, inclusive, and tech-enabled learning space Boola Katitjin, have been shown to enhance the student experience on campus. The university's facilities are designed to support students academically and personally, providing a range of resources and conveniences

- **Research and Innovation** – From its inception, Murdoch has been a research-led university with a reputation for world class research. Our researchers focus on the significant social and scientific challenges of our time, including climate change, environmental sustainability and adaptation, food, water and biosecurity, as well as human and animal health and welfare. Often working with key corporate, academic and government partners, we ensure our research is underpinned by a deep understanding of politics, governance and international affairs. This helps translate outcomes into impact.
- **Community Engagement** – Murdoch University is deeply committed to community engagement, with various programs and initiatives that support and enhance the community. The university's Moorditj Boodja – Strong Country Sustainability Sub-Strategy outlines its vision to lead by example, empowering local and global communities to help foster a future where both people and the planet can thrive.



Ratings and Awards

- **World leading research** – 15 research areas rated ‘above world standard’ by the Australian Research Council.
- **Times Higher Education (THE) World University Rankings 2025:** Placed in the 401–500 bracket worldwide.
- **EduRank 2025:** Positioned #695 globally and #27 in Australia, with strengths in research output and alumni impact.
- **World Architecture Festival 2023:** Winner for the Higher Education and c Building category for the Boola Katitjin building.
- Murdoch University is a proud recipient of a **SAGE Cygnet Award for LGBTIQA+ inclusion**, a major milestone in our ongoing journey towards a truly inclusive future.
- **Athena Swan Bronze Award:** Athena Swan is an internationally recognised accreditation for gender equity, diversity and inclusion in the higher education and research sector, aimed at improving gender equity in science, technology, engineering, mathematics and medicine (STEMM) disciplines.
- Murdoch University has been recognised as a **Platinum level institution in the prestigious FISU Healthy Campus program**, becoming the only university in Western Australia and just the second in Australia to achieve this elite status.



Celebrating 50 years

Murdoch University commenced its 50th anniversary celebrations from 17 September 2024 – five decades since the University's inauguration in 1974 – and coinciding with the birthday of our namesake Sir Walter Murdoch 150 years prior.



1970 The Federal Government announces a **second university** will be established in Western Australia, incorporating the State's first Veterinary School.

1970 WA Premier Sir David Brand announces the new university will be named after **Sir Walter Murdoch**.

1974 Inauguration ceremony to formally open Murdoch University.

1975 More than **500** Foundation students attend orientation week.

1977 61 students are awarded degrees at the University's **inaugural graduation ceremony** at the Perth Concert Hall.

1979 The **Veterinary School** is formally opened by the Hon Sir Charles Court, Premier of Western Australia.



1983 Murdoch's **Aboriginal Education Unit** – later renamed Kulbardi – opens to improve pathways and participation rates for Aboriginal and Torres Strait Islander students.

1986 More than 20,000 people attend the University's **Open Day**.

1988 Total **student enrolments** pass 5,000 for the first time.

1988 Murdoch establishes the **Asia Research Centre**, after securing a \$6 million Australian Research Council Grant in 1990.

1988 A **merger proposal** between The University of Western Australia and Murdoch University, initially proposed earlier in the decade, is defeated in the WA Legislative Council by one vote.



1992 **School of Law** established.

1992 **State Agricultural Biotechnology Centre** established.

1993 **First overseas graduation** ceremony, attended by 128 graduands, held in the Regent Hotel Singapore.

1994 The 175-seat **Nexus Theatre** opens for teaching and wider community performances, seminars and screenings.

1997 **Student enrolments** pass 10,000 for the first time.

1998 WA Governor Major-General Michael Jeffery officially opens Murdoch's **Rockingham Regional Campus**.



2002 **Emeritus Professor Geoffrey Bolton** elected University Chancellor.

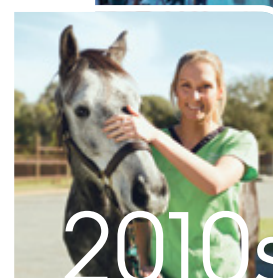
2002 The Bill and Melinda Gates Foundation grant \$13 million to the Centre for Clinical Immunology and Biomedical Statistics for **HIV vaccine** research.

2005 Official launch of the **Peel Regional Campus** at Mandurah.

2007 **Student enrolments** pass **15,000** for the first time.

2007 Federal Government allocates \$19.5 million towards the establishment of the Institute for **Immunology and Infectious Diseases**.

2008 International Study Centre opens in **Dubai**, following the establishment of a Murdoch campus the year before.



2010 Completion of the new **Murdoch Business School** and Murdoch Institute of Technology.

2011 Launch of new \$7.5 million **School of Energy and Engineering**.

2011 The new \$4 million School of **Chiropractic and Sports Science** opens.

2011 Launch of new \$9 million **Veterinary Surgery Teaching Facility**.

2017 Official dedication ceremony of the **Geoffrey Bolton Library**.

2018 \$21 million **Student Hub** officially opens.

2019 The **Australian National Phenome Centre** opens, positioning Western Australia as an international centre in precision medicine.



2020s

2020 The COVID pandemic accelerates **Technology Enhanced Learning**, resulting in a rapid adoption of digital technologies.

2020 Murdoch achieves the **SAGE Athena Swan** bronze accreditation for Murdoch's commitment to improving gender equity and diversity.

2022 Launch of the **Indo-Pacific Research Centre** to raise awareness of critical issues facing the region.

2023 **Boola Katitjin** officially opens to wide acclaim, earning multiple awards nationally and internationally.

2023 The **Food Innovation Precinct WA (FIPWA)** officially opens at Nambelup to support and develop the State's food and beverage sector.

2023 NHMRC recognises Professor Rhonda Marriott's **Birthing on Noongar Boodjar** in its "10 of the Best" research projects for the year.

Murdoch University Study areas

We offer 17 distinct fields of study, each is supported by, state-of-the-art facilities, and a team of dedicated, knowledgeable academics. Our courses are designed to equip students with the skills and knowledge needed to succeed in their chosen careers.

The 17 study areas include:

- **Agricultural Science**
- **Allied Health**
- **Business**
- **Creative Arts and Communication**
- **Criminology**
- **Education**
- **Engineering and Energy**
- **Environmental and Conservation Sciences**
- **Humanities, Arts and Social Sciences**
- **Indigenous Knowledges**
- **Information Technology**
- **Law**
- **Medical, Molecular and Forensic Sciences**
- **Nursing**
- **Physical Sciences and Mathematics**
- **Psychology**
- **Veterinary Science**

Find out more:

www.murdoch.edu.au/study/courses/study-areas

Teaching and study facilities

The Animal Hospital and Working Farms

Our Perth campus is home to a working farm and a fully equipped Veterinary Hospital complete with Small and Large Animal primary care and referral services and a busy emergency clinic

Chiropractic Clinic

Chiropractic Science students, learn to treat patients in our on-campus chiropractic clinic, which houses a rehabilitation centre, physiological therapeutics facility, consulting rooms and a digital radiographic suite

Engineering Pilot Plant

Our nationally renowned Bayer Pilot Plant is where our engineering technology students learn real-world skills. This engineer's playground is one of only a few in Australia and the only one of its kind in Western Australia.

IT Innovation Hub

Fitted out with the latest mixed and augmented reality equipment, operational data centre and high-performance computing capabilities, our IT Innovation Hub is a cutting edge teaching, learning and research facility, specially designed for IT students.

Law Moot Court

In our Herbert Smith Freehills Moot Court, you will have the opportunity to try hypothetical cases in a courtroom environment, develop advocacy and mooting skills, and compete against other law schools from around the world.

Library

The library is a hub for learning, teaching and research for our Murdoch community. At the Murdoch library, you'll find a variety of study spaces alongside our vast collection of print and online resources, computers and support for your future studies and research.

Media Arts Centre

Our Creative Arts or Communications students, get to experience our sound stage, television and radio studios, digital post-production facilities, sound-mixing studios, digital and creation workplaces, and professional video and editing suites.

Mind and Body Lab

This state-of-the-art facility includes fully equipped clinical assessment spaces for adults and children, specialist labs for neurophysiology, cognitive and social psychology research, and a virtual reality space.

Murdoch Psychology Clinic

Murdoch Psychology Clinic provides cognitive assessment, individual and group therapy for adults and a variety of assessments and interventions for children, couples and families.

Nexus Theatre

Equipped with world-class facilities, for the past 31 years Nexus Theatre has been providing students, staff and the Murdoch community with a modern teaching and performance space to enjoy.

Nursing Simulation Suites

In the first week, Murdoch nursing students have the opportunity to experience our state-of-the-art nursing simulation suites at both our Mandurah and Perth campuses. These clinical suites house fully equipped clinical teaching wards, treatment areas, and simulation suites. They can practise their skills on lifelike, high-tech mannequins with heart, lung and digestive sounds, and other realistic features.

SimLab™

Murdoch is proud to be the first university in Australia to offer SimLab™ technology for Education students. An immersive platform that gives students the opportunity to experience, practice and improve their teaching techniques in a safe learning environment.

Sport and Exercise Science Facility

Our sport and exercise science facility houses a dedicated exercise physiology laboratory, complete with a climate and altitude chamber, plus a performance laboratory with motion capture system and running track. It also includes a rehabilitation, strength and conditioning laboratory, complete with fully equipped gym with Olympic lifting facilities. It is also home to a Mind and Body Lab with a fitness testing area and a DEXA machine.



Boola Katitjin

Learn and collaborate with your classmates in our award winning*, technology-enriched building. Staying true to our commitment to the environment, Boola Katitjin has been designed to meet the high standards of the Green Building Council's 6 Star Green Star Design.

**Winner: Higher Education and Research Building, World Architecture Festival, 2023*

Scripts

About Murdoch University: Generic introduction text

Generic – Option 1

From our beginnings as the first Australian university to introduce a flexible admissions system, making education more accessible, to the global centre for learning, teaching, research and industry we are today, we have always kept sight of our purpose. Grounded by our principles and guided by our strategic plan, we remain a place of inclusive education.

With more than 25,000 students and 2,400 staff from 90 different countries, we are proud to be recognised for the impact that our graduates, research and innovations have made, both in Western Australia and around the world.

Generic – Option 2

Murdoch University has, from its foundation in 1974, been a university of difference. From our beginnings as the first Australian university to introduce a flexible admissions system, making education more accessible, to the global centre for learning, teaching, research and industry we are today, we have always kept sight of our purpose. Grounded by our principles and guided by our strategic plan, we are committed to sustainability; equity diversity and inclusion and First Nations.

We are proud to be recognised for the impact that our graduates, research and innovations have made both in Western Australia and around the world.

About Murdoch University:

Student focussed introduction text

Student focussed – Option 1

Murdoch University has, from its foundation in 1974, been a university of difference. Established as the second university in WA, Murdoch University has always been associated with environment and conservation, social justice and inclusion, and providing pathways into and through a university education for people who had previously been excluded.

Murdoch University embraces what's brighter in everyone, then helps spread that brightness so our community can flourish. In a world that craves connections more than ever before, it needs a place and people that are making it brighter.

And that place is here.

Student focussed – Option 2

As a student at Murdoch University, you can look forward to five-star teaching quality, groundbreaking research, and flexible course options. You'll have the opportunity to learn in diverse environments, both inside and outside the classroom. Additionally, you can benefit from a wide range of facilities that support both your professional and personal growth. These include our Boola Katitjin building, an animal hospital, a working farm, chiropractic and psychology clinics, an IT innovation hub, and a law moot court.

For further information or assistance, please contact
the Marketing and Communications Office:

marketing@murdoch.edu.au

CSTASK0090831 08/25

