



Murdoch University's Conference and Events Centre

Available for hire for your next conference, seminar, board meeting or special event.

Looking to book a venue space? Our facilities are designed to accommodate a variety of events, offering flexible spaces that can be tailored to meet your specific needs. From intimate gatherings to large conferences, our team provides exceptional service and ensuring that your event is a success.

Everything you need to host a successful event:

- Equipped with modern presentation technology, including ceiling-mounted projectors, integrated sound systems, microphones, whiteboards and video conferencing capabilities.
- In-house catering.
- On-site staff or concierge services.
- Fully furnished and wheelchair friendly event spaces.
- The new Conference & Events Centre offers competitive rates.



State-of-the-art facilities

Hire a number of spaces that caters for large and small groups, equipped with modern presentation technology.



Sustainable

Surrounded by nature, experience an inspiring environment designed to enhance creativity and foster collaboration.



Easily accessible

Stay connected – our Boola Katitjin building is only 15 minutes by train from Perth CBD.

Our spaces

Location:

Boola Katitjin, Murdoch University,
South Street, Murdoch, WA 6150

All rooms are wheelchair friendly with restroom access,
with heating, cooling and ventilation systems.

FUNCTIONS AND OPEN SPACES

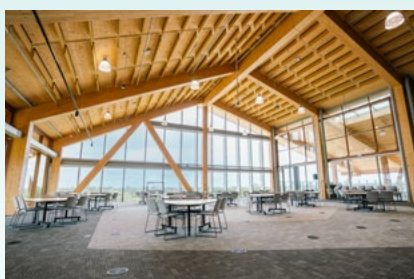
Welcome space

- Level 1
- 150–300 pax



Rosemary Van Den Berg Room

- Level 4
- 100–150 pax
- 350m²



Common area

- Level 3
- 50–100 pax
- 163m²



SEMINAR AND BOARDROOMS

These rooms can be used as one large room, or divided into two smaller spaces and can be hired separately if smaller spaces are required.

360.3.055

- Level 3
- 50–90 pax
- 135m²



360.3.055A:

- 25–45 pax
- 65m²

360.3.055B:

- 25–45 pax
- 69m²

360.3.011

- Level 3
- 25–50 pax
- 134m²



360.3.011A:

- 12–25 pax
- 65m²

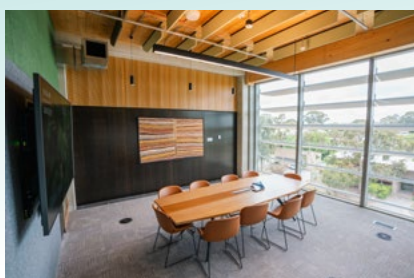
360.3.011B:

- 12–25 pax,
- 69m²

MEETING AND COLLABORATION ROOMS

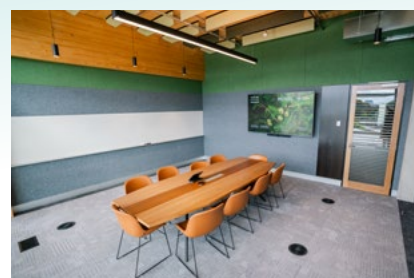
360.3.010

- Level 3
- 10 pax
- 34m²



360.3.014

- Level 3
- 10 pax
- 34m²



Enquire today.

Contact our events team to discuss your requirements, check availability
and arrange a tour of the facilities events@murdoch.edu.au



LEARN MORE